



Science – always keeping the door open

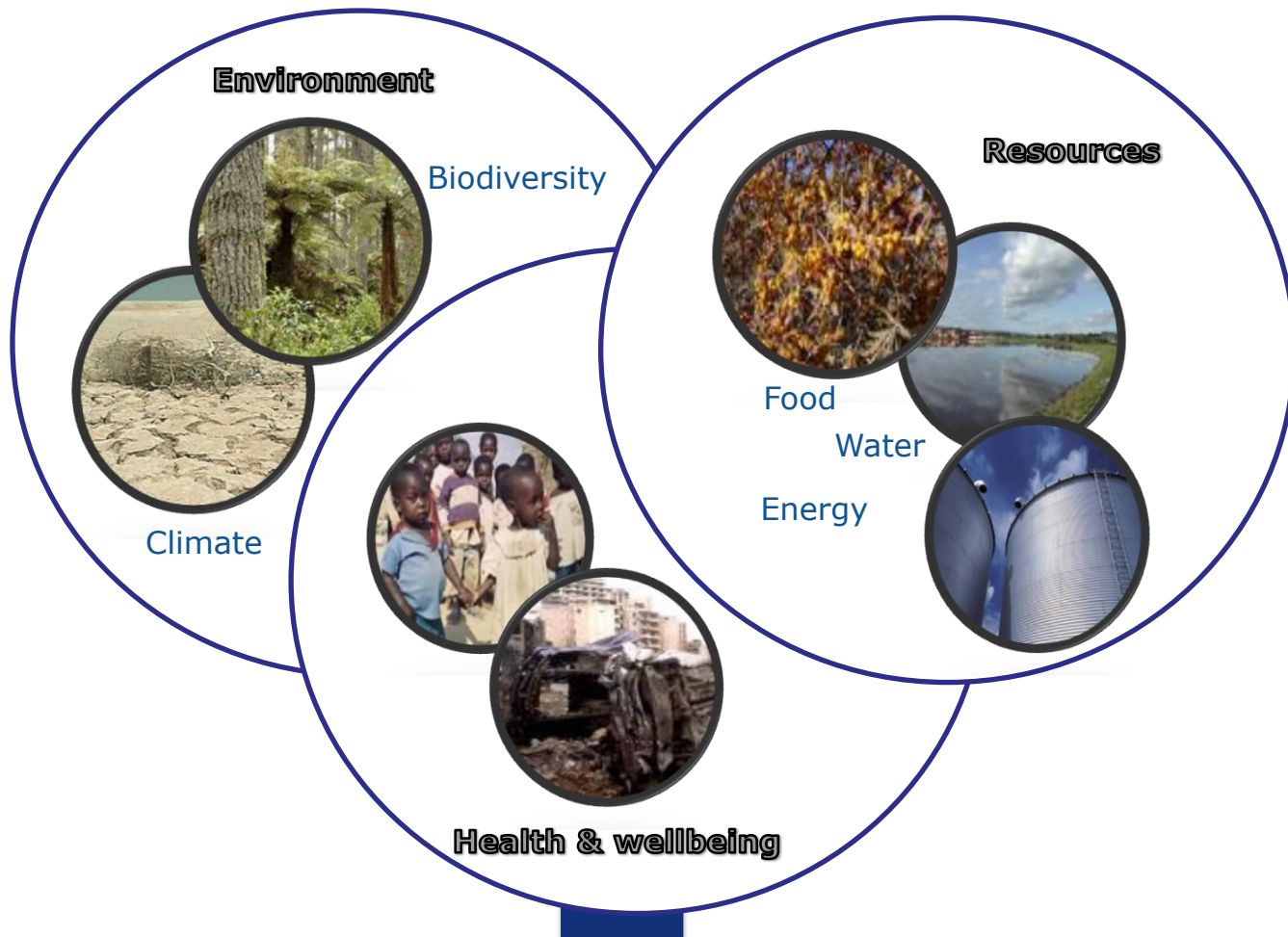


***Professor Anne Glover CBE
Chief Scientific Adviser
to the President of the European Commission***



European
Commission

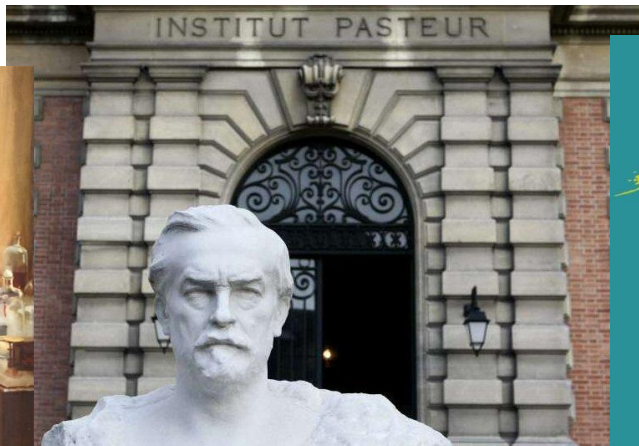
Global challenges and common solutions





European
Commission

Global solutions to common challenges



from the tube to the tube...



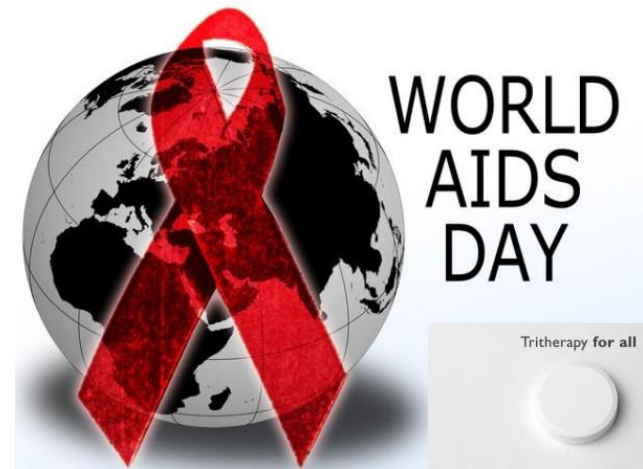
LONDON
SCHOOL of
HYGIENE
& TROPICAL
MEDICINE



ROBERT KOCH INSTITUT

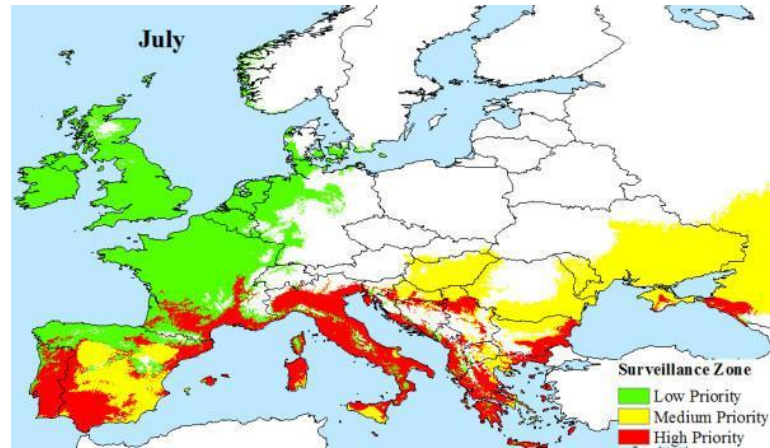
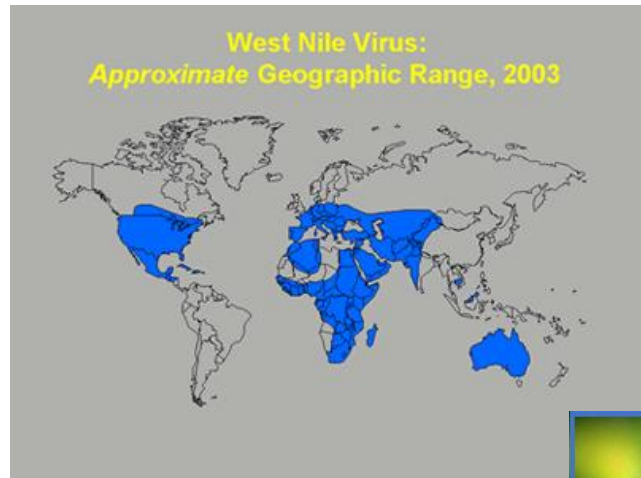


A global approach for global diseases



Risk and reward of drug treatments and vaccines

Southern diseases spread North



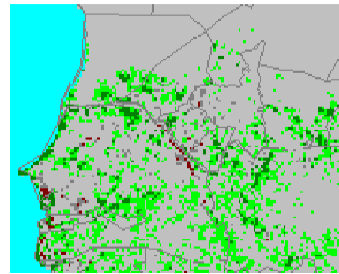
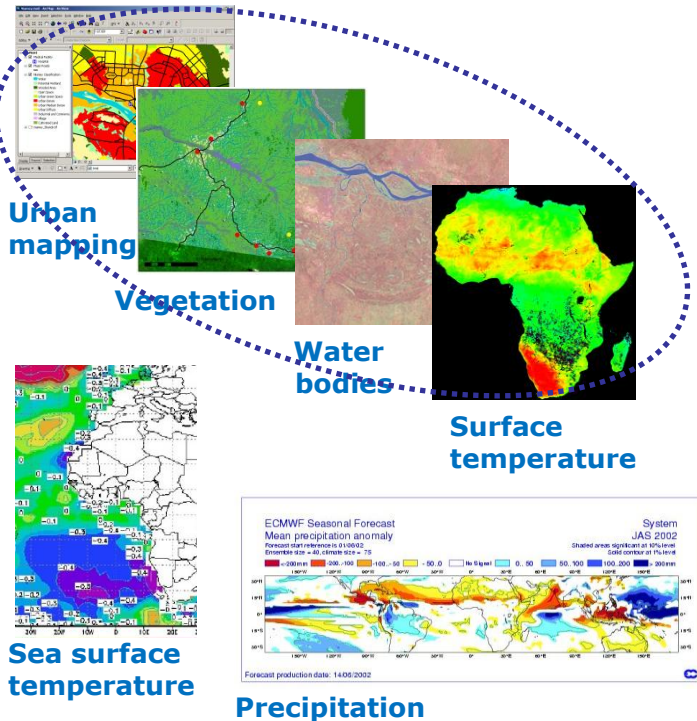
Chikungunya risk map



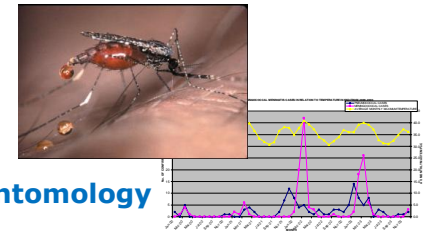


European
Commission

The power of scientific convergence



Public Health Platform
- Risk maps
- Predictive modelling



Epidemiology



Economy

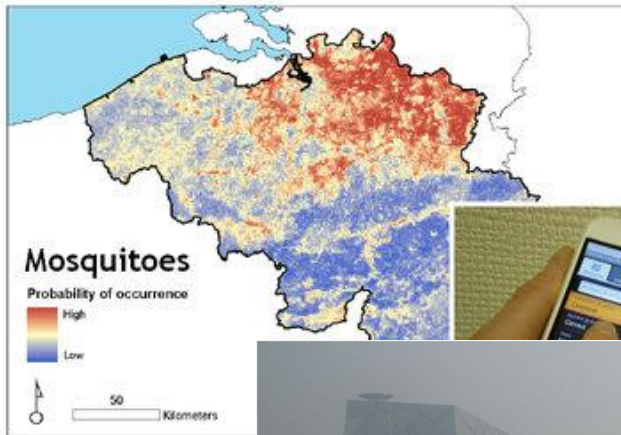


Local meteorology

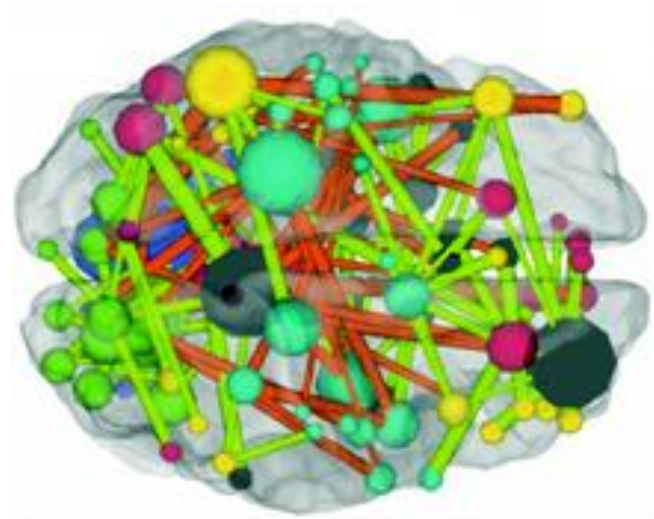
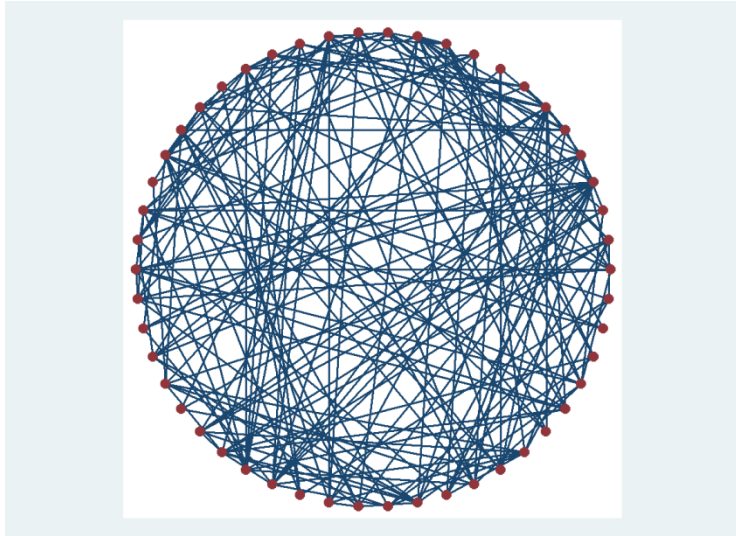


European
Commission

The Data to Policy challenges

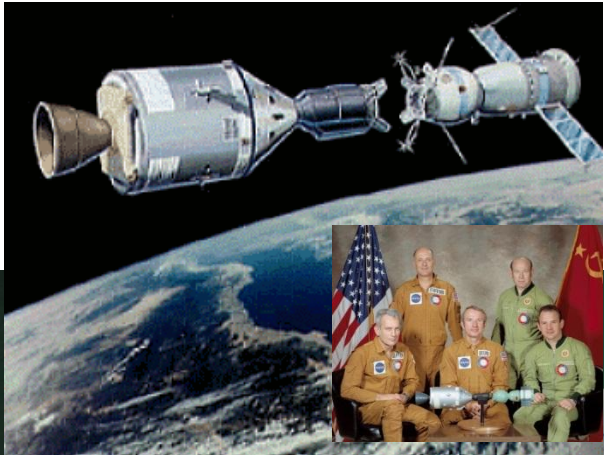


Did you say NSA?



Connections make us what we are!

Science as a universal currency?



From East-West

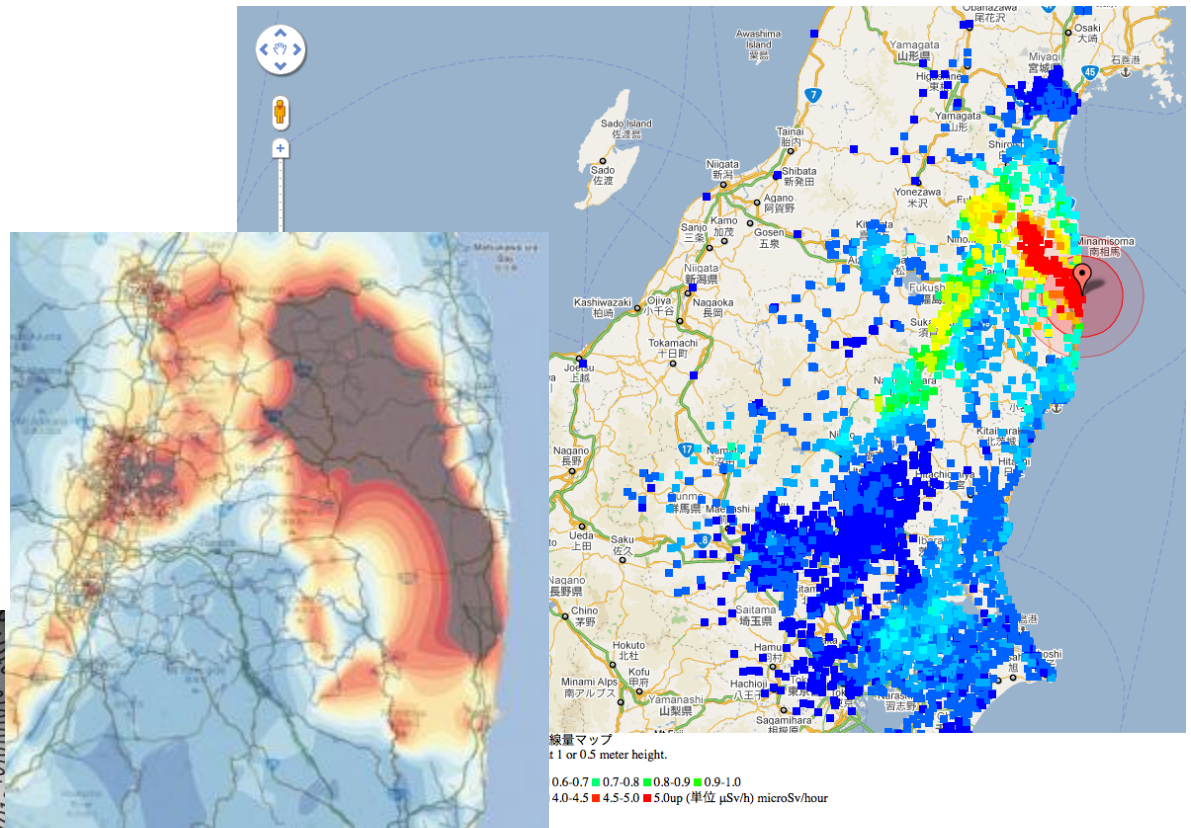
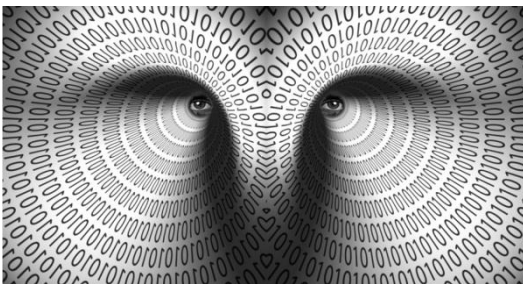
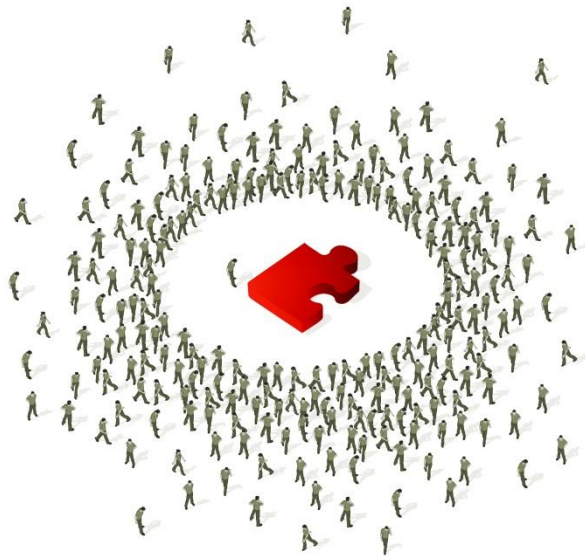


To North-South



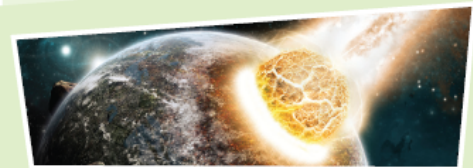
European
Commission

Citizen science in action



Post-Fukushima radiation hotspots using crowdsourcing

The Global Village reality



Vulnerable as individuals or resilient as a species?



European
Commission

Are you ready for it?

We better face it together!

The number of cars will
have doubled, reaching

2 billion



The world population will
have increased by

2 billion

mostly in Asia and Africa.



70%

of people will live in
cities, so in the coming
decades, the equivalent
of a city of 1 million
inhabitants will be
created every week.



SOURCE: UN-MODIS

The number of people
over 80 will have reached

400 million



There will be over

150 million

'climate refugees',
mostly due to the rise
in sea levels.



The time race of evidence



...less than 3 seconds to clear a rugby field



Thank you for your attention!



www.PositScience.com
©2010 Posit Science

E-mail: ec-csa@ec.europa.eu

Twitter: EU_ScienceChief